

TRAY, FLOAT AND FILTER

ECOSS STAINLESS STEEL EVAPORATIVE CONDENSER

Evaporative condensers are an excellent option for large systems, which due to the high thermal loads, a high heat rejection into the atmosphere is necessary. However, one of the operating principles of this type of equipment is the absorption of heat by the water in contact with the coil until evaporation.

As a result, evaporative condensers require some care with the quantity and quality of the water used. Evaporation of water tends to generate the accumulation of solid waste (salts and other minerals) in the equipment tray.



ECOSS is equipped with a debris filter at the pump suction, in order to protect the system against possible accidental suction of objects.

Important Recommendations:

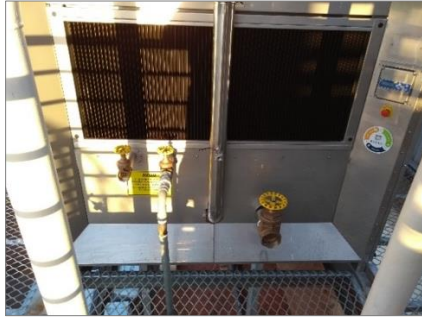
Clean the tray every 15 days (this interval may be shorter depending on the conditions of the water used in the equipment operation).

The correct adjustment of the float for water supply to the equipment is essential. Operating the equipment with water below the recommended minimum level can shorten the service life of the water recirculation pump and immediately invalidate the warranty on this component. On the other hand, equipment with the float adjusted with a water level above the recommended level may cause waste of water.

It is recommended, for a perfect operation of the float valve, the pressure to be adjusted between 0.6 bar and 5 bar.

Tray cleaning procedure:

1st STEP: close the condenser water inlet valve, open the ecess drain valve and drain all water from the tray.



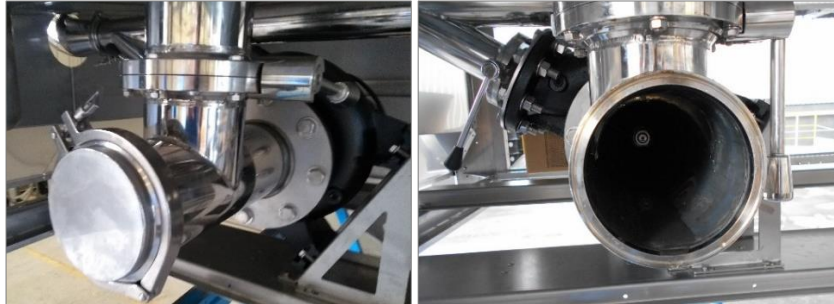
2nd STEP: remove the dirt from the tray with jet wash.



3rd STEP: remove the pump suction filter, clean up and reinstall it.



4th STEP: remove the pump suction clamp, perform the internal cleaning and reinstall it.



5th STEP: after complete cleaning of the tray, close the drain, adjust the float valve and adjust the water level up to the “water level” marking.



BT-010V2/ENG/10.2021

6th STEP: after the condenser initialization, observe if the direction of water distribution occurs towards the center of the tray, in a “v” position. Close the inspection windows and release the equipment for use.



Important!

Failure to clean the tray causes the scale at the components and the spray nozzles become clogged.

For more information, refer to our technical department.